



**TAURUS
CRACO**

282 Orenda Road West,
Brampton, ON L6T 4X6
800-386-5222
www.tauruscraco.com
sales@tauruscraco.com



Raimann ProfiRip KM 310M Automatic Gang Rip Saw

- with 2 Moveable Saw Blades

Technical Specifications:

- Positioning system incl. gear motor for infinite adjustment, by ball-threaded adjustment spindle, of 2 movable saw blades.
- Positioning tolerance: ± 0.01 mm 2 positioning speeds (slow/fast motion)

Saw Assembly

- Cutting width max. 310 mm
- Motor (40 HP)
- "Quickfix" System
- Hydro quick clamping system for the saw blades
 - With gang ripping max. cutting height reduced by 5 mm
 - Incl. 4 clamping devices for 4 saw blades
 - Min. strip width 25 mm
- 4 carbide tipped saw blades $\varnothing 300 \times 3,4/2,2/z=28$
- Saw blade bore 80 mm
- Saw blade diameter (min./max.) 300 / 360 mm
- Maintenance-free support of saw arbor
- Adjustment of saw arbor by hand wheel
- V-belt driven saw arbor, with safety guard
- Diameter of saw arbor 65 mm
- Revolutions of saw arbor 4200 r/min

Saw Blade Adjustment

- **Electronic control system Proficut Direct**
 - Controls the movable saw axles and consists of:
 - SPS control;
 - Coloured touch panel for display and input of cut-lists and machine data as well as error classification;
 - Memory of 10 cut-lists, each of them including max. 10 values per movable saw axle;
 - 10 big push-buttons per movable saw axle;
 - Each 1 joystick per movable saw axle, for infinitely variable adjustment.
 - Caution: temperature range between 0 and +40°C
- **Operating Functions:**
 - Infinitely variable adjustment of the saw axle(s) left/right by Joystick
 - Direct input of individual strip sizes;
 - Selection of memorized strip sizes by big push-buttons;
 - Raster approach positioning: automatic adjustment of a saw axle to memorized strip sizes;
 - Statistics: piece counter for memorized strip sizes and raw boards (passages), meter counter for memorized strip sizes and raw boards as well as an operating hours counter
- Stand alone operator panel, on wheels, incl. 6 m cable
- 1 fix bushing for mounting 1 saw blade is included in "Quickfix"-system



"Quickfix" System



Carbide Tipped Saw Blades



Raimann ProfiRip KM 310M Automatic Gang Rip Saw

- with 2 Moveable Saw Blades

Technical Specifications (Continued):

• Saw Blade Adjustment (Continued)

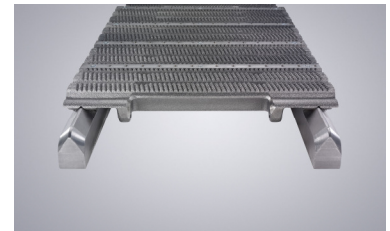
- Each 1 MOVABLE bushing per movable saw axle
Min. cutting width 40 mm
- FIX laser, manually adjustable to indicate saw blade position: 15 mW
- Range, depending on lighting conditions: max. 5 m
- Additional FIX laser, manually adjustable to indicate saw blade position: 15 mW
- Range, depending on lighting conditions: max. 5 m
- MOVABLE laser(s), (each 1 per movable saw axle) to indicate saw blade position. 15 mW
- Range, depending on lighting conditions: max. 5 m
- Incl. adjusting mechanism, synchronous with the movable saw blade

• Feed Chain

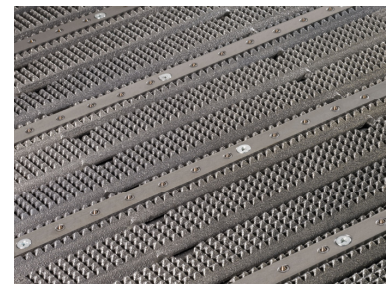
- Infinitely variable feed speed via AC inverter
- Feed speed 5 - 35 m/min
- Feed system 1.3 kW (1.8 HP)
- Chain width 340 mm
- Precise cut by accurate board feed and extremely quiet running of prism guided transport chain, made of high-quality cast
- Automatic adjustable chain lubrication, incl. collecting pan for proper disposal of oil residues
- Closed chain links, wear resisting chain deflection below saw blades
- Spikes, every 3rd chain link
 - Inserts with spikes, screwed on to chain links.
 - Length of spikes, standard: 6 mm
 - Penetration depth, standard: 0.8 mm
 - Penetration depth from 0.8 mm up to 2.8 mm possible on request
 - Spikes guarantee an absolutely parallel board feed and an accurate cut. They are advantageous when cutting contorted, twisted or short boards.
- Chain brush at the outfeed side of the machine, for the permanent cleaning of the closed transport chain from saw dust or chips. Guarantees constant efficiency of the chain and a precise work piece guiding.
- Driven outfeed roller, below, in FLUTED design, with smooth pressure roller from above, for better outfeed of work pieces. Fixed at machine frame, behind transport chain.



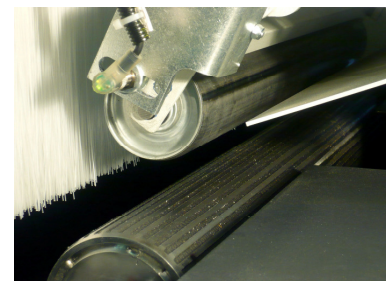
FIX laser, manually adjustable to indicate saw blade position



Precise cut by accurate board feed and extremely quiet running of prism guided transport chain, made of high-quality cast



Spikes, Every 3rd Chain Link



Driven outfeed roller, below, in FLUTED design, with smooth pressure roller from above, for better outfeed of work pieces. Fixed at machine frame, behind transport chain.



Raimann ProfiRip KM 310M Automatic Gang Rip Saw

- with 2 Moveable Saw Blades

Technical Specifications (Continued):

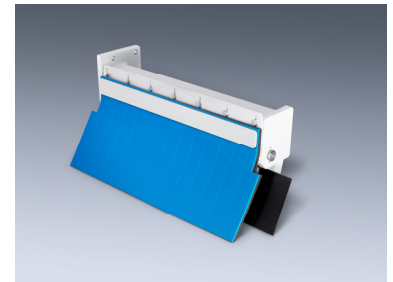
- **Pressure Hood (Continued)**
 - Cutting height max. (with maximum saw blade diameter) with movable blades
 - without pressure board 105 mm
 - with pressure board 90 mm
 - Gang ripping
 - without pressure board 120 mm
 - with pressure board 105 mm
 - Height adjustment of upper pressure rollers via hand wheel and scale
 - 2 adjustable pressure rollers, supported at both sides
 - Shortest piece possible 650 mm
- **Electrics**
 - Electrical cabinet fixed to the machine frame
 - Operation voltage (transformed to 600 Volts)
 - Surcharge for special frequency for frequency other than 50 Hz

Working and Operational Safety

- 1 set of operating manual and service notes, each in German and one EU language of choice (additional copies and languages available upon request at a surcharge)
- Operator tools
- European safety norms (CE), German BG regulations for dust protection
- Multiple anti-kick-back devices
- **RAIMANN SafetyPlus**—An additional Kevlar curtain, improves operators safety from kick-backs including small splinter kick-backs
- Swiveling safety cover, incl. locking and standstill control.
- EMERGENCY STOP switch at the infeed and outfeed side
- Safety cover with noise absorbent lining, incl. observation window

Connections

- Outlet diameter of integrated suction hood Ø 250 mm
- Air velocity for dust exhaust 30 m/sec
- Air volume for dust exhaust, in total 5300 m³/h
- Working height 850 mm
- Total length 1,850 mm
- Total width 1,550 mm
- Height 1,850 mm
- Net weight Approx. 2,200 kg



RAIMANN SafetyPlus—An additional Kevlar curtain, improves operators safety from kick-backs including small splinter kick-backs



**TAURUS
CRACO**

282 Orenda Road West,
Brampton, ON L6T 4X6
800-386-5222
www.tauruscraco.com
sales@tauruscraco.com



Raimann ProfiRip KM 310M Automatic Gang Rip Saw

- with 2 Moveable Saw Blades

Useful Options

Saw Assembly

Saw bushing for gang ripping to prepare saw blades and spacers outside of machine

Motor: 50 HP

Inside diameter: 65 mm

Outside diameter: 80 mm

With key slots for fixation onto the saw arbor

Pressure board made of laminated wood included

Set of Spacers

Variety: 4x1 / 4x2 / 4x5 / 8x10 / 8x20 / 2x30 / 2x15 mm

Outside diameter: 100 mm

Different variety and/or diameter possible

Motorized height adjustment of saw arbor by push button

Feed and Chain SpeedControl

When reaching the maximum current consumption the feed speed is reduced to a preset value.

Pneumatic control of the upper outfeed roller

The control guarantees the outfeed of all rest pieces out of the machine

Pressure Hood

Motorized height adjustment of the pressure unit by push button and digital display

Additional pressure roller within pressure hood to reduce min. length of short work pieces.

Min. timber length, movable blades: 450 mm

Min. timber length, gang ripping: 400 mm

Min. strip width: 20 mm
(depending from work piece height)

Electrics

Surcharge for special voltage

for voltages: 200 - 399 V

Or: 461 - 600 V

PRICE: \$123,720.00 US